



# Plano Boy Scout Troop 71



## Camp Kishwaukee

### GPS Coordinates

N 41°38.121'

W 088°32.253'

### Plano Illinois

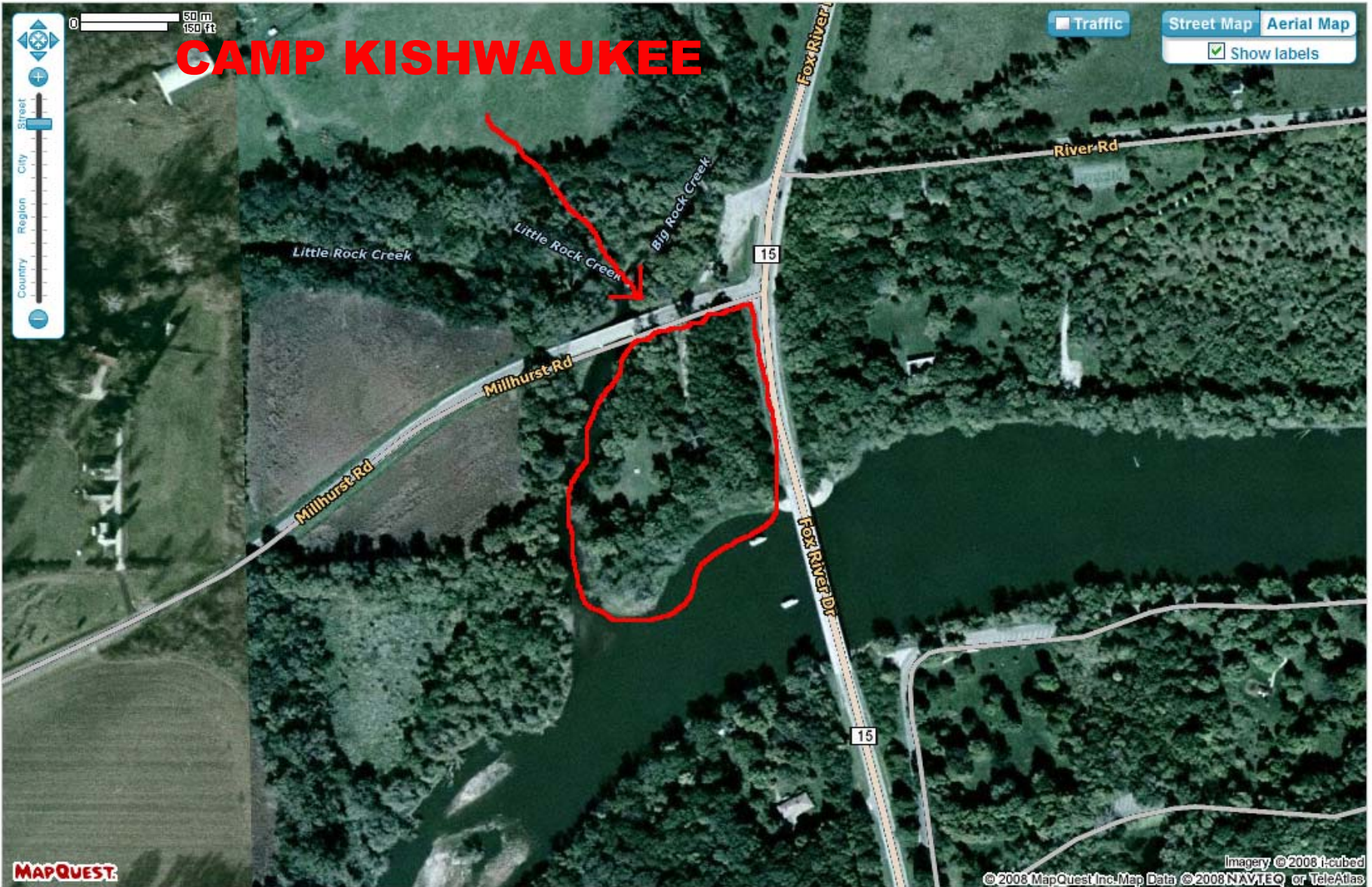


Camp Kishwaukee...

is nestled on the Fox River at the southwest corner of Millhurst Rd and Fox River Rd. All Tuesday scout meetings are held at Camp Kishwaukee as well as various outings. The camp is diagonal to Silver Springs State Park and adjacent to the Farnworth Glass House.

For those traveling on Route 34, drive into Plano and turn south at the stop light on Ben Street and travel through Plano until you leave town. Ben Street turns in Fox River Road. Follow it to the river and turn right (west) onto Millhurst Rd. just prior to crossing the river. It is immediately on the left. Descend down the hill, go through the gate and park to the left watching for ice in the winter, scouts in the summer (well... all year long).

# CAMP KISHWAUKEE



MAPQUEST

Imagery © 2008 I-cubed  
© 2008 MapQuest Inc. Map Data © 2008 NAVTEQ or TeleAtlas